

Lake Davis Trail

Plumas National Forest

Beckwourth Ranger District



Trail Description

Take a leisurely stroll along the Lake Davis Trail. Much of this trail follows the old Feather River Railroad grade. Meandering through the forest, the trail crosses several meadows where boardwalks help protect ecologically sensitive drainage areas. Expect grand views of tall mountains behind beautiful Lake Davis. Spend some time observing wildlife along the way.

This description begins at the trailhead near County Road 126 and Forest Road 24N10.

.3 mile into the hike, an accessible trail to the left leads to a picnic table and a view of Catfish Cove. Back on the main trail, it's only 1.5 miles to the dam. Cross the dam to continue the hike. The trail skirts Grizzly Campground before crossing County Road 112. The trail contours the eastern slope. Openness of the pine and fir forest offers distance to views of meadows, lake and mountains while providing shade for the walk. After 3 miles cross County Road 112 once more. Trails end is only 1 mile ahead at Lightning Tree Boat Ramp. There is a connecting trail to Lightning Tree Campground.

Related Activities

- Visit Smith Peak Fire Lookout
- Bird watching
- Observing wildlife
- Boating - To minimize noise, skiing and jet skis are not allowed on Lake Davis
- Fishing
- Spring flowers
- Fall Colors
- Photography
- Picnic
- Winter snowshoeing and skiing on ungroomed trails

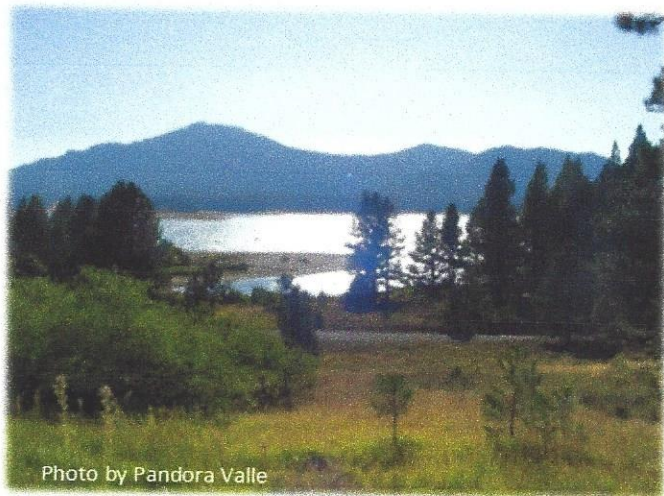


Photo by Pandora Valle

Driving Directions

Drive north from Portola on West Street. This is County Road 126. Proceed about seven miles to the intersection with County Road 24N10. The trailhead and parking is just a bit further on County Road 126.

Notes

- Lake Davis Trail is open to foot, bike and equestrian traffic
- The trail is open year around with ungroomed cross country skiing and snowshoeing in winter
- A short wheelchair accessible trail is available from the paved parking area about one mile past the Lake Davis Trailhead on County Road 126. This trail leads to a picnic table overlooking Catfish Cove
- Picnic Tables are available at Catfish Cove, the dam and Lightning Tree Boat Ramp. Pack out any trash
- Restrooms are available at the dam, Lightning Tree Boat Ramp and some fishing points access points
- Stay hydrated, bring plenty of water

USDA is an equal opportunity provider, employer and lender



Forest Service
Pacific Southwest Region
Plumas National Forest
www.fs.fed.us/r5/plumas

Beckwourth Ranger District
PO Box 7, Blairsden, Ca. 96103
(530) 836-2575
Revised 1/11/2018

Lake Davis Trail

Plumas National Forest
Beckwourth Ranger District

