



**EXISTING**



**PROPOSED**

### Prairie Sunlight Solar

Viewpoint #1: Representation of typical view with a residential setback with 10 years of growth, (Looking North along Nebraska Rd toward Rock Creek Rd)





**EXISTING**



**PROPOSED**

### Prairie Sunlight Solar

Viewpoint #2: Representation of alternative landscape screening with 10 years of growth, (Looking Northwest from Highway 59, South of Jackson Rd)





**EXISTING**

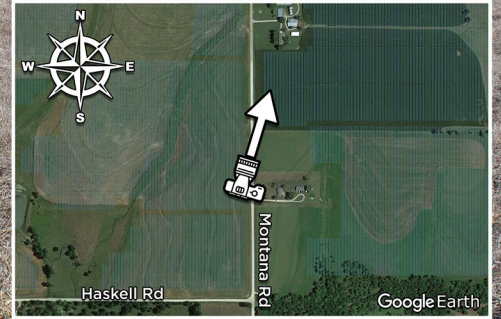


**PROPOSED**

### **Prairie Sunlight Solar**

Viewpoint #3: Representation of typical view with a residential setback with 10 years of growth, (Looking West along Rock Creek Rd, West of Ohio Rd)





**EXISTING**



**PROPOSED**

### Prairie Sunlight Solar

Viewpoint #4: Representation of typical landscape screening with 10 years of growth, (Looking North along Montana Rd, North of Haskell Rd)

